

# YEAR 6 LEARNING MAP AUTUMN TERM



## ENGLISH

**Handwriting:** Develop a neat, fast joined script; Use print with titles etc.

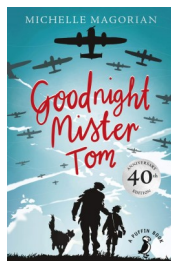
**Spelling:** silent letters b/t, Year 2 words revision, Year 3/4 words revision, double letters, ough, ible/able/ibly/ably, y as in I, ou revision, homophones

**Grammar:** punctuation, sentences, conjunctions, word classes, clauses and phrases, Standard English, formal and informal, word families, synonyms and antonyms

**Reading:** Goodnight Mr Tom/Adolphus Tips; The Boy in Striped Pyjamas; All Aboard Empire Windrush; Core Books; reading fluently; understanding new vocabulary and reading comprehension

### Writing:

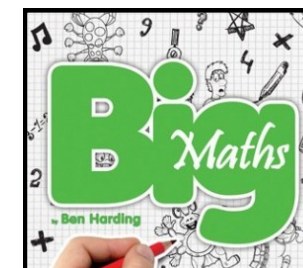
- Letters of Application
- Narrative Writing based on Goodnight Mr Tom/Adolphus Tips
- War Poetry
- Year 6 Poetry Competition



## MATHS

### BIG MATHS, SAFE MATHS, REASONING AND PROBLEM SOLVING

- Number and place value
- Addition and subtraction
- Multiplication and division
- Fractions, decimals and percentages
- Measurements
- Properties of shapes
- Position and direction
- Statistics
- Learning times tables



## HISTORY

### What happened during WW2?

- Big Picture - what do we know about WW2?
- If the First World War was the war to end all wars, why did WW2 happen?
- When was WW2 and what were the main events?

### Battle of Britain

- How serious was the risk of invasion by Nazi Germany in June 1940?
- What did Hitler need to do if an invasion was going to succeed?
- Why did Britain win the Battle of Britain?



## CORE BOOKS

Letters from the Lighthouse, Crater Lake, Private Peaceful, Wonder, Dreamsnatcher, Time Travelling with a Hamster, Mortal Engines, When the Sky Falls & Goldfish Boy, My Secret War Diary, The Night Spinner



## SCIENCE

### Light

- Recognise that light appears to travel in straight lines. Use the idea that light travels in straight lines to explain that objects are seen because they give out or reflect light into the eye.
- Explain that we see things because light travels from light sources to our eyes or from light sources to objects and then to our eyes.
- Explain why shadows have the same shape as the objects that cast them.



### Electricity

- Associate the brightness of a lamp or the volume of a buzzer with the number and voltage of cells used in the circuit
- Compare and give reasons for variations in how components function, including the brightness of bulbs, the loudness of buzzers and the on/off position of switches
- Use recognised symbols when representing a simple circuit in a diagram



# YEAR 6 LEARNING MAP AUTUMN TERM

## IT AND COMPUTING

### Coding

- Designing /making a more complex program
- Using functions , flowcharts and simulations
- Make a text-based adventure game

### Online Safety

- Online dangers and protecting privacy
- Online behaviour and digital footprints
- Managing screen time

### Text Adventures

- Playing and planning a text adventure game
- Making the adventure using 2Create
- Introducing map-based text adventures
- Coding a map-based adventure in 2Code



## ART

### Printmaking and Textiles

- Understand and create simple perspective drawings.
- Create a printed image.
- Artists - Patrick Hughes, L. S. Lowry



## P.E

- **Gymnastics**
- **Swimming**
- **Athletics**
- **Dance– Lindy Hop**



## GEOGRAPHY

- **World - map work and time zones**



## MUSIC – First Access KEYBOARDS

### Rock Music:

- Treble clef notation – identify, read and play notes.
- Listen to/appraise different rock songs (structure, instrumentation, drawing comparisons)
- Games and activities
- Performance



## FRENCH

- **French Sport and the Olympics**
- **French Football Champions**



## DESIGN & TECHNOLOGY

- **Food and Nutrition**



- **Electrical systems**



## R.E

### SACRED TEXTS

#### What can we learn from sacred texts?

- How and why are sacred texts important to people of faith?
- What can we learn from sacred texts about the concepts of LOVE, UNITY, HONESTY, JUSTICE?
- How can we express spirituality and understanding about religious texts?

### CHRISTMAS

- The Gospel Accounts



## PSHE/RSE

### Family and Relationships

- Respect
- Challenging Stereotypes
- Resolving conflict
- Changes and loss - emotions relating to grief



### Safety and the changing body

- Risks associated with alcohol
- Social media
- Puberty (Donna Moore)

### Enterprise

- Christmas Fair



## TRIPS AND EXTRA CURRICULAR

- **History: Imperial War Museum, Manchester**
- **Art: Lowry Gallery, Manchester**
- **MFL: European Day of**
- **Languages 'Spain'**

